

# Meeting Planner Guide

DISCOVER • CONNECT • STAY • ENGAGE • LEARN



MORNINGTON Peninsula  
**BUSINESS EVENTS**



# Contents

**01**

**Mornington Peninsula  
Business Events**

**PAGE**

**3**

**02**

**Welcome to the  
Mornington Peninsula**

**4**

**03**

**Getting around the  
Mornington Peninsula**

**6**

**04**

**Venues &  
Accommodation**

**8**

**05**

**Incentives**

**34**

**06**

**Group Dining**

**42**

**07**

**Familiarisation Tours**

**43**







# Business Events Mornington Peninsula

Want to make your next event one of the most memorable experience for your delegates?  
We here at Business Events Mornington Peninsula are driven to help you achieve just this  
– we see *your* success, as *our* success.

As a FREE service, we know and love our region and can give you the insiders know-how to help you find those hidden gems, that will make your event one that delegates will talk about for months even after the event.

We provide impartial insights into the Mornington Peninsula as we act for the whole region rather than an individual operator. Looking for inspiration, we've got that in spades too - ensuring that

you know about the authentic, only here and now experiences. Finally, we can introduce you to the people you can rely on to make all the magic happen at your event.

As your time is valuable we can manage all your request for proposals from the simple date and rate check to multi-venue, multi-day events. Additionally, we can arrange site inspections and famils to help you see

and experiences firsthand which venues and activities suit your event best.

Want to provide options for post event or partner touring we've got you covered! As a division of Mornington Peninsula Regional Tourism we can leverage from our 350 tourism businesses in region as well as providing you access to digital assets to promote your event.

**ALL SET TO BRING YOUR EVENT TO THE MORNINGTON PENINSULA?**

Visit us at **[BusinessEventsMorningtonPeninsula.com.au](https://BusinessEventsMorningtonPeninsula.com.au)** or call us on 03 5950 1054 to get started on your event planning.

**MORNINGTON Peninsula  
BUSINESS EVENTS**





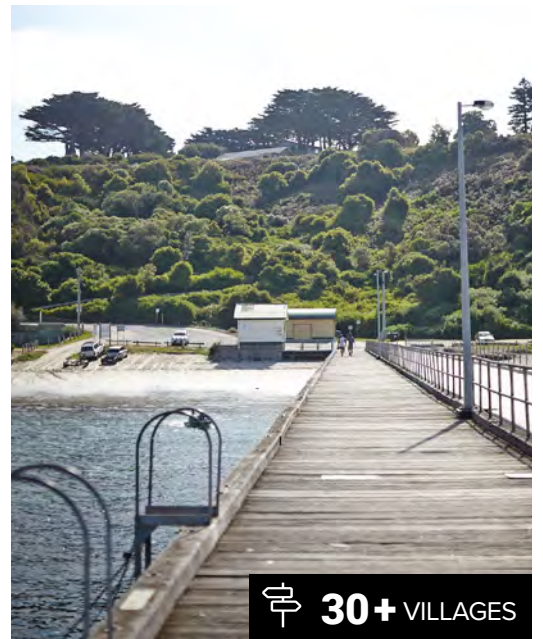
 **190 KMS** OF COASTLINE




 **50** CELLAR DOORS



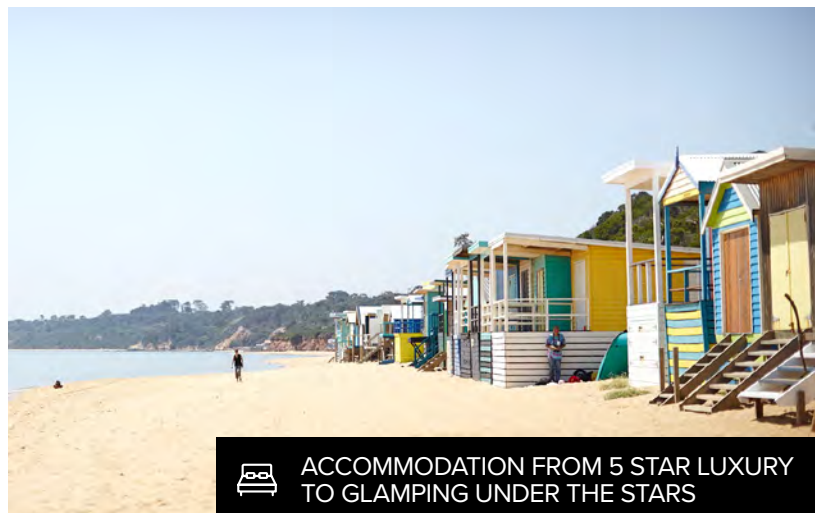
 **18** GOLF COURSES, 3 IN THE TOP 10 IN AUSTRALIA



 **30+** VILLAGES



 **9** CHEF HATTED RESTAURANTS



 ACCOMMODATION FROM 5 STAR LUXURY TO GLAMPING UNDER THE STARS





# Welcome to the Mornington Peninsula

The Mornington Peninsula is renowned for being Melbourne's favourite playground and the secret to discover is it's a great region all year round for conducting business events.

They say a location can make an event and being only an hour from Melbourne your delegates will appreciate that they will spend more time discovering and enjoying the region, rather than simply getting here.

We have been hitting the headlines for all the right reasons and in 2018 the Mornington Peninsula was voted the 'Most Delicious Region' in Australia.

Combine this with \$700 million in investment developing new hidden treasures and reinvigorating existing product, you will find stunning locations and a diverse range of experiences working hand in hand with our venues and accommodation.

We pride ourselves on our city professionalism and relaxed country charm; where you can roll up your

sleeves, feast with foodies, experience the flavours of some of the country's best cool climate wines and craft brews, get gala ready or recharge in the great outdoors every day.

With beautiful sunrises and spectacular sunsets, your delegates will feel recharged and invigorated from the moment they breathe in the fresh salty air.

# Getting around the Mornington Peninsula

## Plan your trip



Flinders - Cape Schanck	10min	Red Hill - Sorrento	33min
Flinders - Dromana	23min	Red Hill - Moorooduc	15min
Cape Schanck - Fingal	16min	Moorooduc - Sorrento	30min
Cape Schanck - Red Hill	16min	Pt Leo - Flinders	11min
Frankston - Mornington	18min	Pt Leo - Cape Schanck	20min
Portsea - Sorrento	7min	Pt Leo - Main Ridge	9min
Portsea - Dromana	36min	Fingal - Flinders	17min
Mornington - Melbourne	60min	Fingal - Portsea	23min
Mornington - Cape Schanck	30min		



# Venues & Accommodation

	PAGE
1 Blairgowrie Yacht Squadron	24
2 Blue Mini - Eatery, Emporium, Events	25
3 Carmel at Sorrento	10
4 Flinders Hotel	12
5 Frankston Arts Centre	14
6 Jackalope Mornington Peninsula	16
7 Lindenderry Red Hill by Lancemore	26
8 Mercure Portsea	27
9 Mornington Racecourse	28
10 Peppers Moonah Links Resort	29
11 Port Phillip Estate	30
12 Portsea Village Resort	18
13 Pt. Leo Estate	31
14 RACV Cape Schanck Resort	32
15 Searoad Ferries	20
16 The Bay Motel - Safety Beach	33
17 Woodman Estate	22

## Incentives

18 Enchanted Adventure Garden & Tree Surfing	36
19 Moonah Links Golf Resort	37
20 Moonraker Dolphins Swims	38
21 Peninsula Hot Springs	39
22 Portsea Golf	40
VineTours	41







# Venues & Accommodation





### It's more than conferencing!

The Mornington Peninsula is a great backdrop for your next product launch, expo, gala dinner, client seminar or team retreat. Don't let our compact destination fool you, we have a diverse range of venues with indoor and outdoor spaces not to mention some pretty spectacular

surroundings to our accommodation. It's all star quality on the Mornington Peninsula — do your delegates prefer five star luxury or sleeping under the stars glamping; whichever the choice is yours.



# Carmel at Sorrento



## VENUE DESCRIPTION

Carmel At Sorrento offers 7 fully appointed 3 bedroom luxury apartments, a penthouse apartment with ultra luxurious appointments and two conference rooms for up to 50 delegates in the heart of Sorrento.

The apartments feature comfortable home away from home living with three bedrooms, free unlimited WiFi, a large modern kitchen with a walk-in pantry, living and dining room, laundry, two bathrooms and a powder room, opening up onto a good sized balcony with outdoor living and a BBQ. The master has a king bed that can convert into 2 king single beds and the 2 other bedrooms have queen sized beds. The Penthouse has 3 king size beds which can convert into 6 king singles.

## KEY FEATURES

- Situated in the heart of Sorrento
- Two fully equipped conference rooms with unlimited WiFi
- Conference rooms conveniently located in the apartment complex
- Half and full-day delegate packages catered to individual requirements

## LOCATION

- Situated in the heart of Sorrento Village
- 90 minute drive from Melbourne

*Carmel*  
AT SORRENTO

142 Ocean Beach Road, Sorrento 3943  
T: +61 3 5984 3512  
stay@carmelatsorrento.com.au  
**carmelatsorrento.com.au**





ROOM NAME	THEATRE	CLASS	BOARD	U SHAPE	COCKTAIL	CABARET	BANQUET SQUARE/LONG	HOLLOW SQUARE
Conference Room 1 (LVL 1)	30-50	30	20	18	50	-	40/32	24
Conference Room 2 (LVL 2)	30-50	30	20	18	50	-	40/32	24
ACCOMMODATION DETAILS								
TYPE	NO. OF ROOMS		NO. OF BEDS					
Apartment	6		1K + 2Q or 2KS + 2Q					
Penthouse	1		3K or 6KS					



**CAPACITY**  
50 PEOPLE



**ACCOMMODATION**  
7 APARTMENTS



**WIFI**



**CONFERENCE  
FACILITIES**

VENUES AND ACCOMMODATION



# Flinders Hotel



## VENUE DESCRIPTION

Bringing together all the elements for a successful business retreat; complimentary WiFi, plenty of free parking, a huge range of local activities, on-site team building options (cooking or cocktail making classes), quality menus, and 4.5 star boutique accommodation.

'Peninsula' is our fully flexible and versatile events space with an abundance of natural light and modern AV facilities. Offering private rooms and tailored dining options for smaller groups, conferences for up to 80 people or cocktail events for 200 people, our unique areas can be adapted to suit your needs.

Flinders Hotel is the ideal base from which to explore more of the hidden gems of the Mornington Peninsula, including leading wineries; quality dining; accessible farm-gates; world class golf, outdoor and cultural attractions.

## LOCATION

- Located in the heart of the historical Mornington Peninsula village of Flinders
- Approximately 75 minutes from Melbourne's CBD

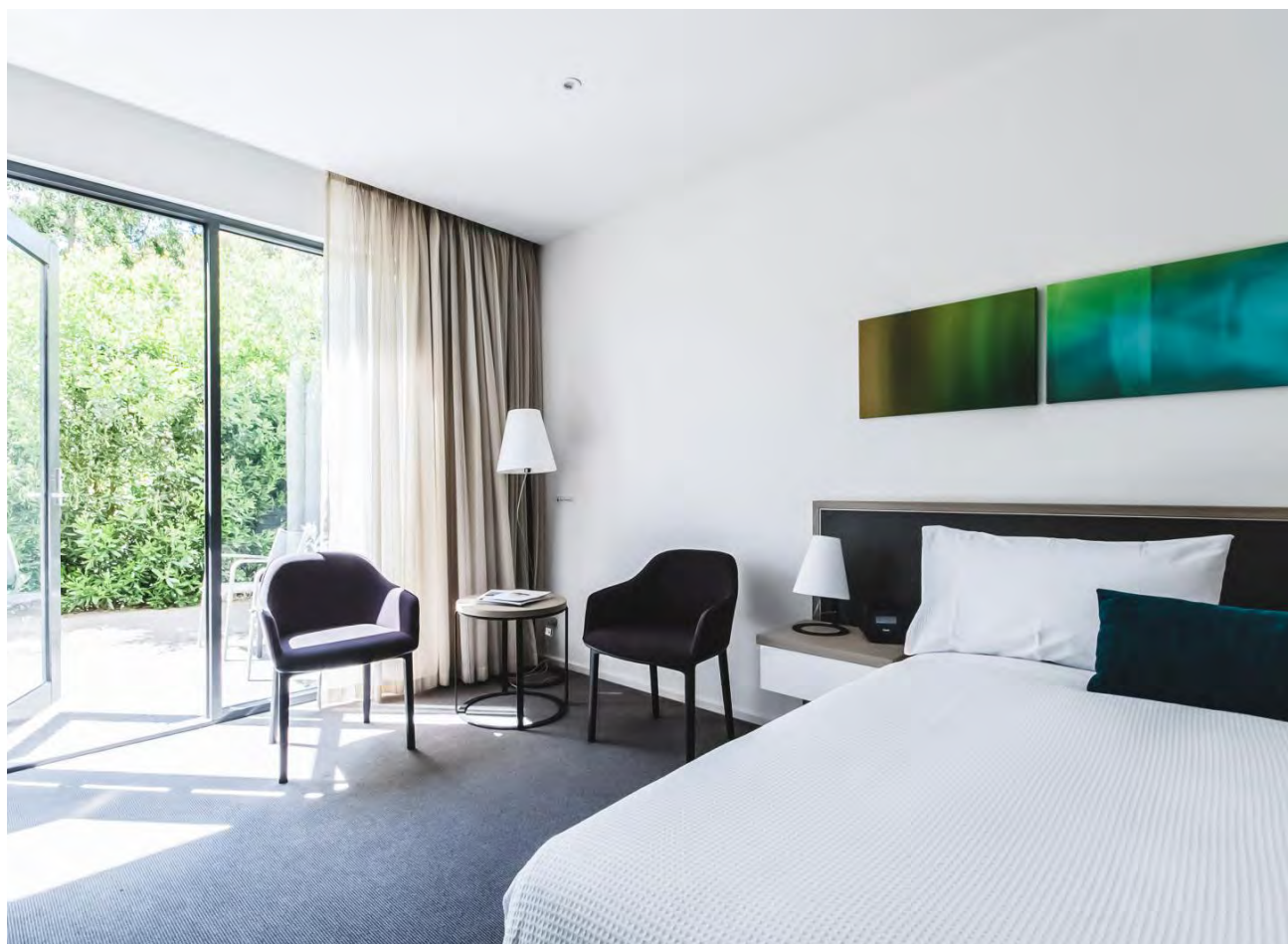
## KEY FEATURES

- Complimentary WiFi
- Fully flexible modern event spaces
- Natural light throughout
- Boutique accommodation and flexible dining options
- On-site cooking class and cocktail making
- Located in the heart of Flinders village and walking distance to Flinders beach

**Flinders  
Hotel**

Cnr. Cook & Wood Streets  
Flinders 3929  
T: +61 3 5989 0201  
kpoole@flindershotel.com.au  
**flindershotel.com.au**





ROOM NAME	THEATRE	CLASS	BOARD	U SHAPE	COCKTAIL	CABARET	BANQUET	Sq(m)
Peninsula 1	40	15	15	20	40	20	30	46
Peninsula 2	40	15	15	20	40	20	30	46
Peninsula 3	40	15	15	20	40	20	30	47
Peninsula 2 & 3	80	32	-	30	80	60	60	92
Peninsula 1, 2 & 3	120	50	-	40	140	80	120	139
Peninsula Bar & Lounge	-	-	-	-	200	-	80	-
Zigis Bar	-	-	10	-	60	-	24	-
Flinders Suite	-	-	6	-	20	-	6	20
ACCOMMODATION DETAILS								
STAR RATING	TYPE	NO. OF ROOMS		NO. OF BEDS				
4.5 stars	Boutique hotel	40		80				

**CAPACITY**  
6 - 200 PEOPLE

**ACCOMMODATION**  
40 ROOMS

**WIFI**

**CONFERENCE FACILITIES**

**TEAM BUILDING**

**DINING OPTIONS**



# Frankston Arts Centre



## VENUE DESCRIPTION

Our function centre is a versatile, large open plan space with floor to ceiling glass windows and a capacity for 450 guests banquet and up to 1,000 cocktail.

Recently refurbished to a very high specification, the Lounge and Balcony suits up to 80 people with exclusive use of the arts centre outdoor balcony and bar. Perfect for al fresco morning tea or sunset drinks, the balcony offers views of our bayside city over to the Dandenong Ranges. With art galleries, a glass cube, terraces, courtyards and light-filled rooms, we can make sure your event exudes creativity and flavour.

## KEY FEATURES

- One of the largest venues on the Mornington Peninsula
- A variety of dedicated function spaces to suit 10 - 1,000 guests
- A premium 800 seat auditorium
- Professional event staff and technical support
- A team of experienced caterers to create gourmet experiences

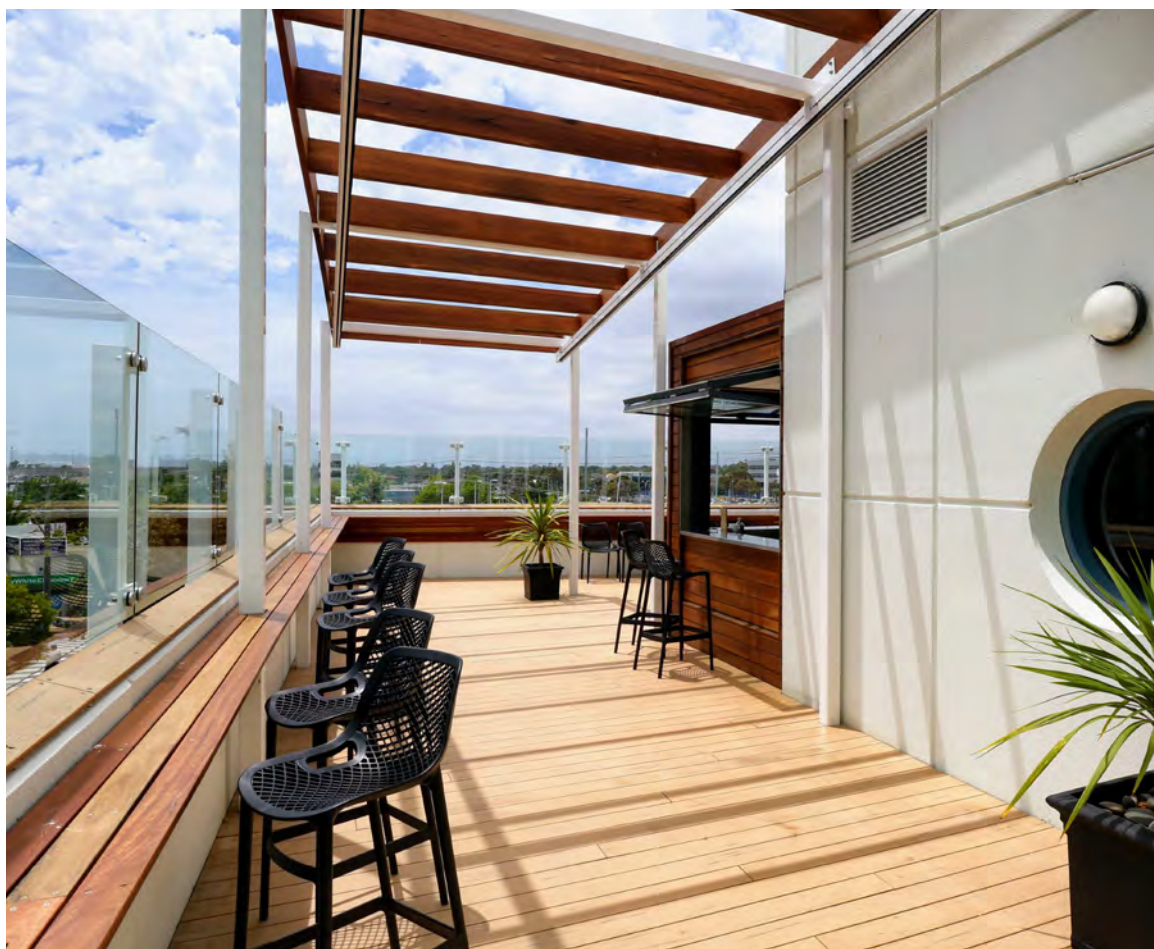
## LOCATION

- 45 minutes from the Melbourne CBD
- 60 minutes from Melbourne Airport
- Easy access via EastLink, Nepean Highway and Peninsula Link
- Central Frankston Location within easy walking distance to trains and buses



27-37 Davey Street, Frankston 3199  
T: +61 3 9784 1965  
function@frankston.vic.gov.au  
thefac.com.au





ROOM NAME	THEATRE	CLASS	BOARD	U SHAPE	COCKTAIL	BANQUET
Rotary Room	350	40	45	30	400	250
Peninsula Room	150	20	30	25	150	150
Function Centre (Rotary + Peninsula)	600	80	-	60	1,000	450
The Lounge & Balcony	80	30	25	20	80	72
Theatre	800	-	-	-	-	-



**CAPACITY**  
10 - 1000 PEOPLE



**WIFI**



**CONFERENCE FACILITIES**



**CATERING**

**VENUES AND ACCOMMODATION**



# Jackalope Mornington Peninsula



## VENUE DESCRIPTION

Situated on a private vineyard in the heart of the Mornington Peninsula wine region, Jackalope delivers an experience to remember for those seeking the very best in luxury conferencing.

State of the art conference rooms cater to a range of event and seating requirements and offer the convenience of close proximity to the hotel's accommodation and other in-house facilities. Also on-property, highlights include a working winery, and immersive food and wine experiences delivered through two awarded restaurants, a cocktail bar and cellar door. A 24-hour concierge service and a dedicated events team are also on-hand to ensure the perfect stay.

## KEY FEATURES

- Australia's 'Regional Hotel of the Year' (2017) and 'Boutique Hotel of the Year' (2018) - Gourmet Traveller
- 45 luxury rooms - an attractive buyout size
- Just 1 hour from Melbourne's CBD
- Stunning event spaces overlooking the vineyard

## LOCATION

- Just a 1 hour drive from Melbourne, the Mornington Peninsula has long been known as Melbourne's weekend playground. With a moderate, coastal climate, the Peninsula offers year-round opportunities to explore the region's many wineries, breweries, restaurants, or tee off on its world-class golf courses.

# JACKALOPE

166 Balnarring Road  
Merricks North 3921  
T: +61 3 5931 2500  
[corporate@jackalopehotels.com](mailto:corporate@jackalopehotels.com)  
[jackalopehotels.com](http://jackalopehotels.com)





THEATRE	CLASS	BOARD	U SHAPE	COCKTAIL	SEATED DINING
84	36	40	29	100	66
ACCOMMODATION DETAILS					
STAR RATING	TYPE	NO. OF ROOMS		NO. OF BEDS	
5	Boutique	45		61	

**CAPACITY**  
29-100 PEOPLE

**ACCOMMODATION**  
45 ROOMS

**WIFI**

**CONFERENCE FACILITIES**

**DINING OPTIONS**

**CELLAR DOOR**

**VENUES AND ACCOMMODATION**



# Portsea Village Resort



## VENUE DESCRIPTION

Portsea Village Resort offers facilities for conferences, corporate retreats and board meetings. We strive to exceed our clients' expectations and deliver a memorable experience. Our dedicated conference professional will work with you to make sure all your needs are met.

The conference room boasts natural light, ergonomic chairs and facilities including DVD/TV, data projector, white board and flip charts, stationary and sweet treats. Accommodation is spacious and inviting with generous bedrooms, bathroom and private balcony.

Guests can choose from indoor and outdoor pool or relax in a spa or sauna. The more energetic may decide to visit the Fitness Centre or opt for a game of tennis or squash. Right outside the door is the famous Portsea Pier, and down the road Point Nepean National Park, the ideal location for Team Building activities.

## LOCATION

- Located in Portsea on the picturesque Mornington Peninsula
- Located in a peaceful relaxed environment surrounded by beaches
- 90 minute drive from the CBD

## KEY FEATURES

- Conference room and boardroom
- 23 apartments, accommodating 43 singles or 88 twin share
- Same day quoting
- Free high speed WiFi
- Data projector, white board, flip charts, stationery, sweet treats and much more!
- Natural light and tranquil views



PORTSEA VILLAGE RESORT

3765 Point Nepean Road, Portsea 3944  
T: +61 3 5984 8484  
[enquiries@portseavillageresort.com](mailto:enquiries@portseavillageresort.com)  
[portseavillageresort.com](http://portseavillageresort.com)





ROOM NAME	THEATRE	CLASS	BOARD	U SHAPE	COCKTAIL	SEATED	DIMENSIONS
Conference Room	60	36	24	24	-	-	15.2 x 5.8
Boardroom (breakout)	20	12	10+	-	-	-	7.9 x 4.1
Restaurant	-	-	-	-	130	80	14.3 x 6.4
Lounge (breakout)	-	-	10	12	-	-	8.0 x 6.4
ACCOMMODATION DETAILS							
STAR RATING	TYPE	NO. OF ROOMS			NO. OF BEDS		
4	Apartments	43			88		



**CAPACITY**  
10 - 130 PEOPLE



**ACCOMMODATION**  
43 ROOMS



**WIFI**



**CONFERENCE FACILITIES**



**GROUP EXPERIENCES**



**CATERING**

VENUES AND ACCOMMODATION



# Searoad Ferries



## VENUE DESCRIPTION

A perfect venue with unrivaled bay views. Spot dolphins, relax and enjoy the scenery. A unique way to start or end a conference, host a meeting or break out session or hold a cocktail event.

Catering for small to large groups, from 20 to 400, our venues range from a private lounge to the entire ferry. Floor to ceiling windows, amazing views, flexible layout options and an experienced functions and catering team can make your next event like no other. Menus are designed using regional produce, wine, cider and ales from both sides of the bay.

## KEY FEATURES

- Two world-class ferries catering for 20-400 people
- Fully customised events with an experienced functions and catering team
- Unrivalled bay views between Sorrento and Queenscliff
- Smaller open deck vessel available for charter

## LOCATION

- Sailing the Port Phillip bay between Sorrento and Queenscliff



1 Wharf Street, Queenscliff 3225  
T: +61 3 5257 4500  
functions@searoad.com.au  
**searoad.com.au**





ROOM NAME	THEATRE	CLASS	BOARD	U SHAPE	COCKTAIL	CABARET
MV Sorrento	150	-	100	-	400	-
MV Queenscliff	50	-	30	-	400	-
RORO Café	-	-	30	-	100	-



**CAPACITY**  
20- 400 PEOPLE



**CONFERENCE FACILITIES**



**CATERING**



**DINING OPTIONS**

VENUES AND ACCOMMODATION



# Woodman Estate



## VENUE DESCRIPTION

Escape the city and enjoy all that is tranquil, calm and rural at Woodman Estate. Set on a magnificent private lake, enjoy conference rooms with an abundance of natural light, complemented by award winning accommodation, acclaimed dining and an indulgent wellness retreat.

We provide everything required to make your next business event a success. This beautiful venue offers an abundance of natural light in the many event spaces. Whilst staying with us, you will be dining on local produce sourced fresh and seasonally - straight from the growers.

## KEY FEATURES

- 10 luxurious rooms with either garden or lakeside views
- Abundance of natural light throughout
- On-site wellness centre and group activities
- Flip charts, white boards, projector screen and complimentary WiFi

## LOCATION

- Nestled amidst 50 acres of fragrant bush land and gardens, on a picturesque lake
- Only 60 minutes from Melbourne

WOODMAN  
*Estate*

LUXURY HOTEL • RESTAURANT • WELLNESS RETREAT

136 Graydens Road, Moorooduc 3933  
T: +61 3 5978 8455  
res@woodmanestate.com  
**woodmanestate.com**





ROOM NAME	THEATRE	CLASS	BOARD	U SHAPE	COCKTAIL	BANQUET
Atrium	20	20	16	16	40	30
Brasserie	30	30	30	26	60	60
Formal Dining Room	12	12	14	12	20	20
Lakeside Chalet	4	4	4	4	4	4
ACCOMMODATION DETAILS						
STAR RATING	TYPE		NO. OF ROOMS		NO. OF BEDS	
4.5	Boutique		10		17	



**CAPACITY**  
4 - 60 PEOPLE



**ACCOMMODATION**  
10 ROOMS



**WIFI**



**CONFERENCE FACILITIES**



**GROUP EXPERIENCES**



**OUTDOOR SPACES**

VENUES AND ACCOMMODATION



# Blairgowrie Yacht Squadron



## VENUE DESCRIPTION

Whether you're planning a residential conference, team building weekend, an annual meeting or gala dinner, Blairgowrie Yacht Squadron (BYS) is the perfect choice for your next event.

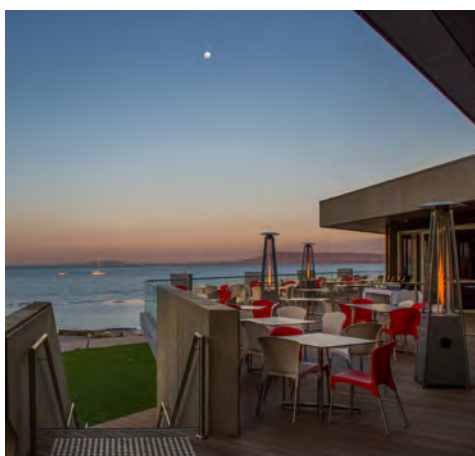
BYS can put together a comprehensive package to meet all of your requirements for your entire time away. Along with a variety of event spaces, we also have the famous deck overlooking the water, available for dining or break out spaces. Accommodation is located directly opposite the venue and a wide array of activities located on-site and close by.

## LOCATION

- On the water's edge of the Peninsula
- Breathtaking views overlooking the marina, Cameron's Bight and Port Philip

## KEY FEATURES

- Event and dining spaces on the water's edge
- Tailored catering packages
- Activities on-site and nearby
- Accommodation across the road



**CAPACITY**  
20 - 170 PEOPLE



**WIFI**



**CONFERENCE FACILITIES**



**TEAM BUILDING**



**CATERING**



**OUTDOOR SPACES**



**BLAIRGOWRIE YACHT SQUADRON**

2900 Point Nepean Road  
Blairgowrie 3942  
T: +61 3 5 925 9600  
events@bys.asn.au  
**bys.asn.au**

ROOM NAME	THEATRE	CLASS	BOARD	U SHAPE	COCKTAIL	CABARET	BANQUET
Southern Waters Room (This room can also be divided in half for a smaller space or two separate spaces)	170	150	-	-	150	150	150
Commodores Lounge	30	30	25	20	30	30	30
McCarthy Centre	30	30	25	20	-	30	-



# Blue Mini – Eatery, Emporium, Events



### VENUE DESCRIPTION

Blue Mini is a one of a kind venue – Eatery, Emporium, Events. Located within an old Ten Pin Bowling Alley, it presents a unique function space full of charm and local history.

The intimate boardroom is perfect for small meetings, while the spacious eatery is suited to larger groups. Also specialising in off-site catering for meetings, conferences, casual dining and formal events, Blue Mini is serviced by a passionate team of hospitality professionals with combined experience of over 60 years in catering on the Mornington Peninsula and offers innovative seasonal menus, local wine/beer/cider and house-roasted coffee.

### LOCATION

- Located at the Mornington Peninsula freeway exit, Rosebud
- Close to accommodation, wineries and attractions
- Ample on-site parking

### KEY FEATURES

- Boardroom seating 25
- Room hire includes catering package
- WiFi and whiteboard
- Unique space for larger functions
- Off-site catering available



ROOM NAME	THEATRE	CLASS	BOARD	U SHAPE	COCKTAIL	CABARET
Boardroom	-	-	25	-	-	-
Eatery	-	-	-	-	120	100



CAPACITY  
25 - 120 PEOPLE



WIFI



CONFERENCE  
FACILITIES



CATERING

VENUES AND ACCOMMODATION

BLUE MINI

eatery . emporium & events



2 Colchester Road  
Rosebud 3939  
T: +61 3 5981 2520  
info@bluemini.com.au  
bluemini.com.au



# Lindenderry Red Hill by Lancemore



## VENUE DESCRIPTION

Recently refurbished by awarded design studio Hecker Guthrie, our breathtaking interiors deliver European country style with a distinctive Australian twist.

Ready to meet any event brief, large or small, Lindenderry offers endless spaces to make your own. From 30 stunning acres of gardens and vines, to intimate lounges, grand private dining spaces and purpose-built meeting spaces. It's a place where delegates can be free of distraction, energised by nature's beauty and experience the best of the Mornington Peninsula.

## LOCATION

- Located in the heart of Red Hill
- 60 minutes from Melbourne, yet an entire world away

## KEY FEATURES

- 4 flexible light filled event spaces to cater for 4-120 delegates
- Award winning restaurant 'The Dining Room'
- 34 acres of garden and vines
- Indoor pool, spa, sauna and tennis courts



ROOM NAME	AREA (sqm)	HEIGHT (m)	THEATRE	CLASS	BOARD	U SHAPE	BANQUET	COCKTAIL	CABARET	BUFFET	DINNER DANCE
Lakeview	340	2	200	110	-	-	150	220	110	150	140
Woodclyff	120	3.5	72	48	42	32	-	-	56	-	-
Burton	120	3	50	36	36	26	62	80	40	60	50
Vauluse	42	2.8	24	12	12	15	-	-	15	-	-
Arcadia	20	3.1	-	-	8	8	-	-	-	-	-
ACCOMMODATION DETAILS											
STAR RATING		TYPE		NO. OF ROOMS				NO. OF BEDS			
5		Suite		40				67			



**CAPACITY**  
8 - 220 PEOPLE



**ACCOMMODATION**  
40 ROOMS



**WIFI**



**CONFERENCE FACILITIES**



**GROUP EXPERIENCES**



**OUTDOOR SPACES**



**LINDENDERRY RED HILL**  
BY LANCEMORE

142 Arthurs Seat Road  
Red Hill 3937

T: +61 3 5989 2933

events@lindenderry.com.au

[lancemore.com.au/lindenderry](http://lancemore.com.au/lindenderry)



# Mercure Portsea



## VENUE DESCRIPTION

Situated on the Mornington Peninsula, overlooking Portsea Golf Club, Mercure Portsea specialises in meetings, seminars, executive retreats, gala dinners and fun team building activities.

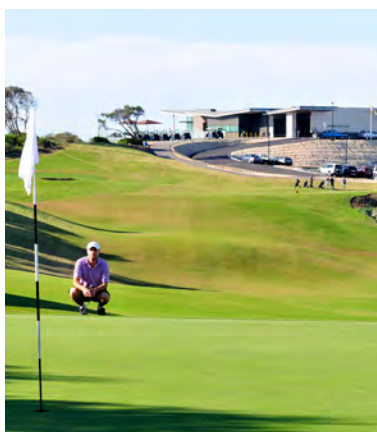
With three sophisticated meeting spaces, a range of outdoor settings with spectacular views of the golf course and Port Phillip Bay. Our experienced and dedicated conference and events team will be there every step of the way to help plan and host the function that will 'WOW' your guests.

## LOCATION

- Located amongst the rolling hills of Portsea Golf Course with spectacular views towards Port Phillip Bay
- 90 minutes from Melbourne and under two hours from Tullamarine Airport

## KEY FEATURES

- A scenic and secluded Mornington Peninsula setting
- 18 Hole championship golf course
- Three spacious meeting rooms filled with natural light
- On-site and off-site team building activities
- Customised catering menus
- State of the art audiovisual equipment and support



ROOM NAME	THEATRE	CLASS	BOARD	U SHAPE	COCKTAIL	CABARET
Boardroom	20	-	16	10	-	-
Portsea Room	80	66	40	40	150	80
Lounge	30	30	30	20	50	40
Portsea Room & Lounge	-	150	-	-	300	150
ACCOMMODATION DETAILS						
STAR RATING	TYPE	NO. OF ROOMS		NO. OF BEDS		
4	Hotel Room	24		48		



**CAPACITY**  
300 PEOPLE



**ACCOMMODATION**  
24 ROOMS



**WIFI**



**CONFERENCE FACILITIES**



**CATERING**



**GOLF COURSE**

VENUES AND ACCOMMODATION

**Mercure**  
HOTELS

**PORTSEA GOLF CLUB**

46 London Bridge Road  
Portsea 3931

T: +61 3 5981 6100

hotevents@portseagolf.com.au

[portseagolf.com.au/cms/mornington-peninsula-conference-meetings-seminars/](http://portseagolf.com.au/cms/mornington-peninsula-conference-meetings-seminars/)

# Mornington Racecourse



## VENUE DESCRIPTION

Experience the surrounds of the Mornington Racecourse, the premier entertainment complex on the Mornington Peninsula. Whether you're planning a gala dinner, exhibition, business conference or product launch, our diverse range of rooms and facilities can be tailored to suit any event.

With the benefit of being able to cater for intimate gatherings or large events, whether it is indoor or outdoor, we are a multi-purpose venue that provides incredible flexibility for event organisers all located within less than one hour's travel from Melbourne.

### KEY FEATURES

- Versatile indoor and outdoor spaces catering for a variety of events
- Dedicated experienced professional team
- Superior catering services
- Free parking for up to 5,000 cars
- Natural light filled rooms

### LOCATION

- Centrally located in Mornington, with easy access from Melbourne CBD via Nepean Hwy or the Peninsula Link
- The best of the Mornington Peninsula's golf courses and wineries are on our doorstep presenting organisers with the opportunity to use the Mornington Racecourse as a base to explore many attractions



**CAPACITY**  
20 - 800 PEOPLE



**WIFI**



**CONFERENCE FACILITIES**



**CATERING**



**GROUP EXPERIENCES**



**OUTDOOR SPACES**

ROOM NAME	ROOM SIZE (m <sup>2</sup> )	THEATRE	CLASS	BOARD	U SHAPE	COCKTAIL	BANQUET
Gunnamtta	900	500	300	-	-	800	650
Silver Bounty	300	200	100	-	30	250	140
Panorama	355	120	50	20	24	120	80
Peninsula	456	100	50	50	50	500	340
The Lodge	110	100	50	50	50	100	60
Final Furlong	545	300	200	-	-	450	350



320 Racecourse Road  
Mornington 3931  
T: +61 3 5975 3310  
jwarne@mrc.net.au  
**mrc.racing.com**



# Peppers Moonah Links Resort



## VENUE DESCRIPTION

Set amongst stunning golf course scenery Peppers Moonah Links Resort makes for a memorable conference and incentive destination.

We offer seven spacious meeting spaces, including three boardrooms ideal for breakout groups or secretarial space. All meeting rooms offer natural light, views of the golf course, AV equipment, blackout facilities, wireless internet and broadband capabilities. A dedicated conference coordinator is provided from start to finish, staging and theming available on request, and continuous Nespresso pod coffee and herbal tea varieties.

### KEY FEATURES

- Luxuriously appointed guest rooms
- Extensive banquet and conference facilities
- Full à la carte restaurant
- Two 18 hole Championship golf courses
- Spike Bar & Café
- On-site day spa

### LOCATION

- 90 minutes from Melbourne
- Conveniently located next to one of Victoria's most popular award winning attractions, the Peninsula Hot Springs

ROOM NAME	AREA (m <sup>2</sup> )	HEIGHT	THEATRE	CLASS	BOARD	U SHAPE	BANQUET	CABARET	CANAPÉS
Thomson	140	3.6	120	75	50	40	90	60	150
Thomson 1	70	3.6	60	25	20	20	40	24	60
Thomson 2	70	3.6	60	25	20	20	40	24	60
Stoneheaven	30	3	60	-	10	-	-	-	-
AGU Room	38	3	-	-	16	-	-	-	-
Marquee	240	3	200	-	-	-	150	100	250
Lodge	-	-	-	-	6	-	-	-	-
Ridge Room	124	-	100	50	30	32	80	40	110
Salt Room	124	-	100	50	30	32	80	40	110
Rush Room	124	-	100	50	30	32	80	40	110
ACCOMMODATION DETAILS									
STAR RATING	TYPE		NO. OF ROOMS				NO. OF BEDS		
4	Resort		70				70		



**CAPACITY**  
6 - 250 PEOPLE



**ACCOMMODATION**  
70 ROOMS



**WIFI**



**CONFERENCE FACILITIES**



**CATERING**



**GOLF COURSE**

VENUES AND ACCOMMODATION

**PEPPERS**  
MOONAH LINKS RESORT  
MORNINGTON PENINSULA

55 Peter Thomson Drive  
Fingal 3939  
T: +61 3 5988 2000  
moonah@peppers.com.au  
**moonahlinks.com.au**

# Port Phillip Estate



### VENUE DESCRIPTION

With panoramic views over undulating vineyards to the sea, Port Phillip Estate offers a versatile environment for a variety of business events.

The natural light and inspirational views create an ideal environment for executive retreats, client negotiations, business gatherings and meetings. Your group will experience a unique, professional and intimate atmosphere for working sessions complimented with refined cuisine, acclaimed wines and exceptional service.

### LOCATION

- The 6 contemporary designed suites enjoy spectacular vineyard and coastal views, private terraces and interiors that exude the utmost luxury

### KEY FEATURES

- A versatile environment for a variety of business events
- Intimate atmosphere for working sessions complimented with refined cuisine, acclaimed wines and exceptional service
- 6 contemporary luxury suites



ROOM NAME	THEATRE	U SHAPE	BANQUET
Boardroom	30	18	18
Dining Room	-	-	125
Cellar Door	60	-	60
ACCOMMODATION DETAILS			
STAR RATING	TYPE	NO. OF ROOMS	NO. OF BEDS
5 (self-rated)	Suites	6	7



CAPACITY  
18 - 125 PEOPLE



ACCOMMODATION  
6 ROOMS



WIFI



CONFERENCE  
FACILITIES



DINING  
OPTIONS



CELLAR  
DOOR

## PORT PHILLIP ESTATE

263 Red Hill Road  
Red Hill South 3937  
T: +61 3 5989 4444  
events@portphillipestate.com.au  
**portphillipestate.com.au**



# Pt. Leo Estate



### VENUE DESCRIPTION

Pt. Leo Estate is truly a visual feast for all who visit with art, rolling vineyards and ocean views commanding the horizon as far as the eye can see.

From the moment guests arrive, they are taken by the sweeping views that emerge in front of them encapsulating glimpses of Phillip Island, across the 50 acre vineyard, landscapes of grazing cattle and an expansive 19 acre Sculpture Park with the vast Westernport Bay. Comprising a cellar door at one end and ‘Laura’, our fine dining restaurant to the other, the Pt. Leo Restaurant experience sits at the heart of this world class venue.

### LOCATION

- Pt. Leo Estate is located in the relaxed village of Merricks on the Mornington Peninsula

### KEY FEATURES

- 110-seat Pt. Leo Restaurant
- Intimate fine dining restaurant Laura
- 19 acre Sculpture Park housing an ever-evolving outdoor gallery of over 50 Australian and International pieces

ROOM NAME	CAPACITY (SEATED)
Laura Restaurant	20 - 50
Pt. Leo Restaurant	50 - 110
Pt. Leo Wine Terrace	100

CAPACITY  
110 PEOPLE

WIFI

DINING  
OPTIONS

GROUP  
EXPERIENCES

OUTDOOR  
SPACES

CELLAR  
DOOR

VENUES AND ACCOMMODATION

## PT LEO ESTATE

3649 Frankston-Flinders Road  
Merricks 3916  
T: +61 3 5989 9011  
info@ptleoestate.com.au  
**ptleoestate.com.au**

# RACV Cape Schanck Resort



## VENUE DESCRIPTION

The extensive conference and events facilities at RACV Cape Schanck Resort include well appointed ballrooms, conference rooms, breakout areas and beautiful outdoor spaces all providing breathtaking views of the natural surrounds and an abundance of natural light.

High-quality accommodation options are available ranging from resort-style rooms, villas and luxury suites. The resort also features a golf course, day spa, fitness centre, 25m heated indoor pool, spa and sauna, casual and fine dining options.

## LOCATION

- Situated on the southern-most tip of Victoria's Mornington Peninsula
- 75-minute drive from Melbourne CBD via the Peninsula Link Freeway

## KEY FEATURES

- 10 event spaces with capacity from 10 - 450 delegates
- 204 accommodation rooms including suites and villas
- Fitness centre, golf course and day spa



**CAPACITY**  
10 - 450 PEOPLE



**ACCOMMODATION**  
204 ROOMS



**WIFI**



**CONFERENCE FACILITIES**



**GROUP EXPERIENCES**



**GOLF COURSE**

ROOM NAME	THEATRE	CLASS	BOARD	U SHAPE	COCKTAIL	CABARET	BANQUET
Great Southern Ballroom	450	200	-	-	450	280	350
Great Southern Ballroom 1 or 2	225	100	-	50	225	135	170
Horizon Ballroom	370	140	-	-	370	216	270
Horizon Ballroom 1 or 2	185	70	-	35	185	88	130
Flinders 1 or 2	40	-	20	-	-	24	30
Bass 2-5	-	-	10	-	-	-	10
ACCOMMODATION DETAILS							
STAR RATING	TYPE	NO. OF ROOMS		NO. OF BEDS			
5 (Self Rated)	Resort	204		408			

RACV CONFERENCES  
AND EVENTS



Trent Jones Drive  
Cape Schanck 3939  
T: +61 35950-8000

capeschanck\_conference@racv.com.au

**racv.com.au/capeschanck**



# The Bay Motel – Safety Beach



## VENUE DESCRIPTION

The Bay Motel's central location on the Mornington Peninsula makes it the perfect accommodation base for off-site conferencing and team building activities.

26 rooms in a variety of configurations, all with a kitchenette suited to the corporate traveler.

## LOCATION

- Ideally located just a couple of kilometres from the Mornington Peninsula freeway
- Easy access to a magnificent array of activities the region has on offer

## KEY FEATURES

- Perfectly located only 250 metres to one of Port Phillip Bays finest beaches
- Centrally located to cafés, restaurants, bars & wineries
- Free WiFi
- BBQ facilities, air conditioning and HD televisions
- Ample parking on-site
- Package deals combining experiences and accommodation



**CAPACITY**  
62 PEOPLE



**ACCOMMODATION**  
26 ROOMS



**WIFI**

VENUES AND ACCOMMODATION

**BAY MOTEL**  
SAFETY BEACH

21-31 Nepean Hwy  
Safety Beach 3936  
T: +61 3 5987 2311  
info@thebaymotel.com.au  
**thebaymotel.com.au**

## ACCOMMODATION DETAILS

NUMBER OF ROOMS	MAX CAPACITY
26	62





# Incentives





Get creative with your next event itinerary and up the fun factor for your delegates by adding one of the many experiences we have on offer on the Mornington Peninsula.

Activities can be as relaxing as wine tasting, bathing at geothermal springs and sightseeing, or as wild as surfing through the trees high up on a zipline and swimming with the dolphins. Whichever your style, your delegates will appreciate the device disconnect, allowing them time to reconnect.



# Enchanted Adventure Garden & Tree Surfing



## VENUE DESCRIPTION

Take your business to new heights. The Enchanted Adventure Garden & Tree Surfing is a unique and versatile Business Events destination – we pride ourselves on being able to tailor our programs to meet your groups’ specific needs.

Over 22 acres of exploring gardens, mazes and adventure activities including brain teasing puzzles, giant tube slides, two traditional hedge mazes and a great quiz trail. There are plenty of options for groups wanting to enjoy a break after a productive meeting or conference.

## LOCATION

- Less than an hour from Melbourne
- 500m from Arthurs Seat Summit

## KEY FEATURES

- Versatile team building activities
- Tree Surfing
- Zip lining
- Private marquee



ACTIVITY	CAPACITY (seated/standing)	DESCRIPTION
The Big Top Marquee	150 pax/ more standing	An ideal private space located within our garden for you to host your conference. It features clear blinds, electricity, tables and chairs. Groups over 40 pax with catering are required to hire the Big Top as part of their booking
Private Pavilion	25-30 pax/ more standing	This space is located just next to our Big Top Marquee and features clear blinds, tables and chairs



CAPACITY  
150 PEOPLE



GROUP  
EXPERIENCES



CATERING



TREE SURFING  
AND ZIP LINING



PRIVATE  
MARQUEE



DINING  
OPTIONS

ENCHANTED  
ADVENTURE GARDEN



55 Purves Road  
Arthurs Seat 3199  
T: +61 3 5981 8449  
groups@enchantedadventure.com.au  
**enchantedadventure.com.au**



# Moonah Links Golf Resort



## VENUE DESCRIPTION

Moonah Links Resort constitutes one of the finest, most comprehensive golf resorts in the country. Consisting of two world class courses, elite practice facilities designed to Australian Institute of Sport's standards, and the largest fleet of motorized golf carts in Victoria. In addition a fully integrated Golf Pavilion provides change rooms, restaurant, bars, conference facilities and a large viewing deck.

Opened in late 2003, Moonah Links Resort has achieved global recognition and acclaim having hosted five major internationally telecast tournaments: the 2003 and 2005 Australian Open Golf Championships and the 2008, 2009 and 2010 Moonah Classic.

## LOCATION

- Only 90 minutes from Melbourne CBD via Eastlink and Peninsula link
- Shares a border with Peninsula Hot Springs, in one of the best golfing regions in the country

## KEY FEATURES

- A grade quality Titleist hire clubs
- On course signage or display of promotional material
- A fully stocked Food Cart circulating the courses
- Dedicated registration desk



CAPACITY  
300 PEOPLE



2 GOLF  
COURSES



MOTORISED  
GOLF CARTS



DINING

INCENTIVES



**MOONAH LINKS**  
THE HOME OF AUSTRALIAN GOLF

55 Peter Thomson Drive  
Fingal 3939  
T: +61 3 5988 2047  
proshop@moonahlinks.com.au  
**moonahlinks.com.au/cms**

# Moonraker Dolphin Swims



## VENUE DESCRIPTION

Join the award-winning team at Moonraker Dolphins Swims and experience the very best of Victoria's aquatic wildlife. Snorkel with dolphins, swim alongside cheeky fur seals, explore underwater marine parks filled with colourful fish and join the search for weedy sea dragons.

Moonraker offers a range of swimming and sightseeing options as well as luxury private tours incorporating breakfast, lunch, cocktail and seafood indulgent packages for groups of up to 80 guests.

These spectacular adventures are suited to all ages and abilities, providing the chance to view some of Australia's marine wildlife and picturesque coast line in style.

## LOCATION

- Located in the coastal town of Sorrento on the Mornington Peninsula
- 90 minutes drive from Melbourne CBD

## KEY FEATURES

- Dolphin and Seal swimming and sightseeing activities
- Wildlife adventure sightseeing tours
- Luxury private charters
- Corporate, group, special event cruises



CAPACITY  
80 PEOPLE



DOLPHIN  
AND SEAL  
VIEWING



SNORKELING



SIGHTSEEING



INDULGENT  
CATERING



LUXURY  
PRIVATE  
CHARTERS



Sorrento Pier, Esplanade Road  
Sorrento 3943  
T: +61 3 5984 4211  
[info@moonrakercharters.com.au](mailto:info@moonrakercharters.com.au)  
[moonrakercharters.com.au](http://moonrakercharters.com.au)



# Peninsula Hot Springs



## VENUE DESCRIPTION

Peninsula Hot Springs is an award-winning natural hot springs on the Mornington Peninsula, only 90 minutes from Melbourne. Natural thermal mineral waters flow into the pools at our coastal oasis, allowing you to connect with yourself and nature in the company of others.

Bath House is our social geothermal bathing wonderland featuring over 50 global bathing experiences ideal for large groups looking to explore and wander in nature. Our Moroccan tent is available for exclusive lunches for up to 30 guests. The Spa Dreaming Centre is our premium offering reserved for guests aged 16 and above and is ideal for small groups seeking a more serene bathing experience. Our Spa Dreaming Centre café is available for private evening functions, Monday to Wednesday.

## LOCATION

- 70 minute drive from South Melbourne
- 15 minute drive from several conference resorts and golf courses

## KEY FEATURES

- Award-winning natural hot springs and wellness destination
- Over 50 globally-inspired bathing experiences
- New range of wellness activities for small groups



ACTIVITIES			
BATHING		WELLNESS GROUP ACTIVITIES	
Bath House	200 people	Global Bathing Journey	10 people
Spa Dreaming Centre	10 people	Body Clay Ritual	24 people
DINING		Indigenous Cultural Walk	24 people
Bath House Moroccan Tent	30 people	WELLNESS CENTRE HIRE	
Spa Dreaming Centre Café	10 people	Wellness Studio	24 people
DAY SPA		Boardroom	12 people
Spa Treatment	10 people	Full Venue	40 people



CAPACITY  
200 PEOPLE



30 BATHING  
EXPERIENCES



DINING  
OPTIONS



GROUP  
WELLNESS  
EXPERIENCES



WELLNESS  
CENTRE HIRE

INCENTIVES



PENINSULA  
HOT SPRINGS

140 Springs Lane  
Fingal 3939  
T: +61 3 5950 8777  
groups@peninsulahotsprings.com  
**peninsulahotsprings.com**

# Portsea Golf Club



## VENUE DESCRIPTION

Portsea Golf Club is a golfer's dream. The course is ranked 19th in Australia's Top 100 Public Access courses according to Golf Australia – naturally it's the best on the Mornington Peninsula.

The 18 hole, par 71 championship course, has a classically designed layout that has evolved from a nine-hole track created by Scottish professional Jock Young. The stunning setting and challenging layout, combine to produce an enjoyable game of golf for all players.



CAPACITY  
200 PEOPLE



GOLF  
COURSE

## KEY FEATURES

- Set amongst rolling sand dunes and coastal vegetation with spectacular views across Port Phillip Bay
- 18 hole layout has fast draining fairways
- Kept in fantastic playing condition all year round

## LOCATION

- Portsea Golf Club is set overlooking Port Phillip Bay bordering Point Nepean National Park



PortseaGolfClub

46 London Bridge Road  
Portsea 3944

T: +61 3 5981-6100

hotevents@portseagolf.com.au

**portseagolf.com.au**



# VineTours



## VENUE DESCRIPTION

Enjoy a leisurely bike ride experience, combining a love of the outdoors and fresh air with fun gourmet food and wine tastings. For groups up to 20, the day can be tailored to ability and preferences.

The guided tour includes bikes, helmets, water bottles, morning tea and a visit to 2 Mornington Peninsula wineries. Lunch and transport can be included for additional charge.

## KEY FEATURES

- Leisurely group bike riding experiences on the beautiful Mornington Peninsula
- A relaxed cycle stopping along the way to sample local gourmet food and wine tastings
- We will make your team or corporate occasion one to truly remember

## LOCATION

- Dirt tracks and rail trails through Red Hill and surrounding Mornington Peninsula



CAPACITY  
4 - 20 PEOPLE



CYCLING



FOOD  
AND WINE  
TASTING



ESSENTIAL  
EQUIPMENT  
PROVIDED



GROUP  
EXPERIENCES

INCENTIVES



4 Spink Street  
Brighton 3186  
T: +61 419 548 096  
info@vinetours.com.au  
**vinetours.com.au**





# Group Dining



Want options to create that memorable breakfast, luncheon or dinner?

The Mornington Peninsula has an array of unique dining experiences, catering to your specific needs. Let us know the group size, budget and dining fare you are after, and we will put you in touch with the right people.







# Familiarisation Tours



We understand there is nothing like experiencing a venue or activity first hand.



**So join our team on one of our exclusive, customised familiarisation tours.**

**REGISTER YOUR INTEREST BY EMAILING  
[kathryn.gilbert@businesseventsmp.com](mailto:kathryn.gilbert@businesseventsmp.com)**



